



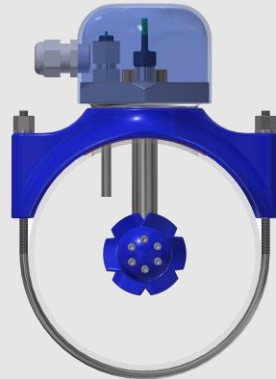
**P O G M I**  
POWER OFF GRID MINI

AUTONOMOUS MONITORING  
IN WATER DISTRIBUTION  
N E T W O R K S

2 0 1 8

[www.sea-lix.com](http://www.sea-lix.com)

# POGMI



**AUTONOMOUS DATA HARVESTING**  
flow+pressure+temperature+pH

P O W E R I N G  
Smart Water  
N e t w o r k s

**POGMI by Sea-Lix is a game-changing autonomous monitoring unit providing data for Smart Water Network operation.**

The **POGMI** comprises a turbine-driven generator providing power to an integrated sensor package providing operational data: Flow/ Pressure/ Temperature as well as pH (optional). Data is logged and communicated using the **SUDA** IoT interface or any other preferred system.

A set-up in any given District Metered Area (DMA) implementing POGMI monitoring spots, may include the **POPCO** pressure control turbine for continuous pressure management including regeneration of power from excessive pressure. It will also be a tool for leakage detection. POGMI's bigger sister, **POGMI** may be applied in cases where an elevated power consumption is anticipated.

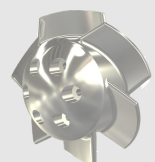
**Excessive pressures in water distribution networks** are a major contributor to leakage and non-revenue water. Implementing pressure management have shown the potential of reducing leakage rates by more than 50% in some cases.

## Highlights

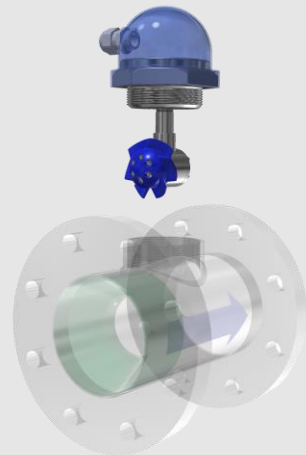
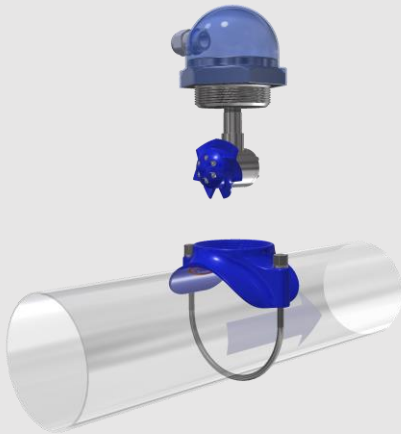
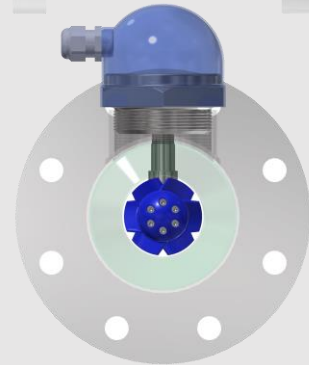
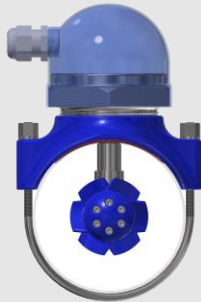
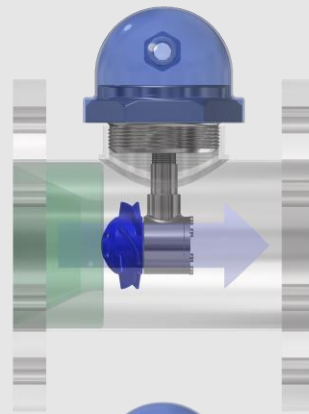
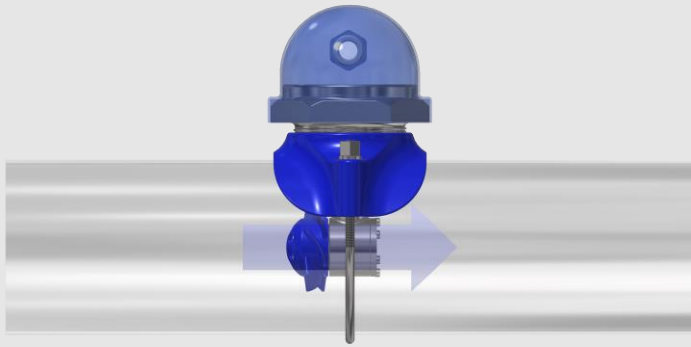
- ▶ Autonomous – always fully charged
- ▶ Data: Flow/ Pressure/ Temperature/ pH or whatever is required
- ▶ Plug and Play
- ▶ Compact/ alternative means of connection
- ▶ Minimal head loss

+47 22 69 75 00  
[sales@sea-lix.com](mailto:sales@sea-lix.com)  
[www.sea-lix.com](http://www.sea-lix.com)

Sea-Lix AS  
Kristian Augusts gate 7 A  
0164 Oslo  
Norway



# A L T E R N A T I V E S



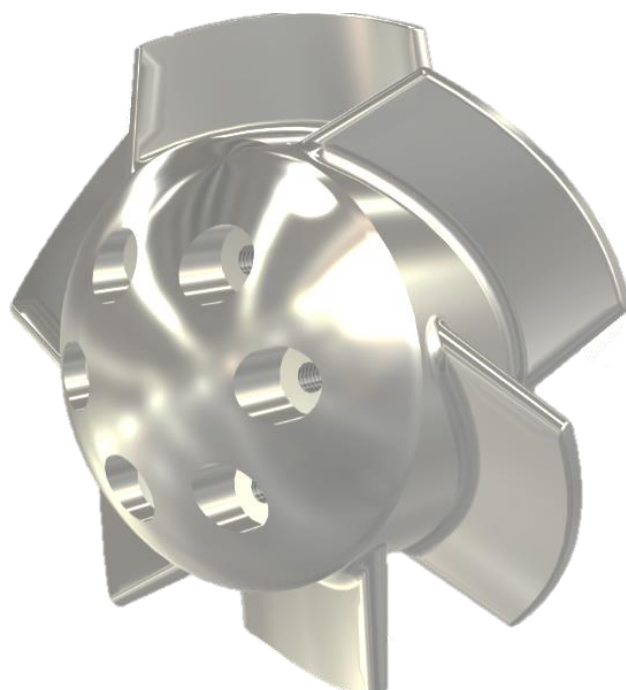
Saddleclamp: S models

Flanged: F models

MODEL	DIMENSION/ CONNECTION	MODEL	DIMENSION/ CONNECTION
POGMI S80	DN80/ Saddleclamp	POGMI F80	DN80/ Flanged
POGMI S100	DN100/ Saddleclamp	POGMI F100	DN100/ Flanged
POGMI S150	DN150/ Saddleclamp	POGMI F150	DN150 Flanged
POGMI S200	DN200/ Saddleclamp	POGMI F200	DN200 Flanged

POGMI - RELIABLE POWER FOR SENSORS, DATA HARVESTING AND COMMUNICATION. INTEGRATED TURBINE FLOWMETER FUNCTION

# POGMI



**Sea-Lix AS** • Company number: 997 615 506 • VAT number: NO 997 615 506 MVA.  
**Tel:** +4722697500 • [post@sea-lix.com](mailto:post@sea-lix.com) • [www.sea-lix.com](http://www.sea-lix.com)  
**Office:** Kristian Augusts Gate 7 A • 0164 Oslo • Norway  
**Post:** PO Box 9 • 2005 Rælingen • Norway